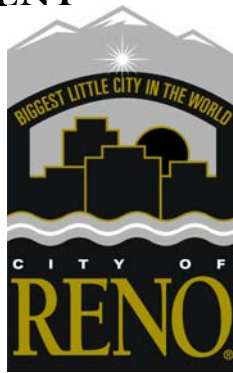


PUBLIC WORKS DEPARTMENT

Steve Varela, P.E.
Director of Public Works/
City Engineer
(775) 334-2215



TO: Ted Bendure, FHWA
Todd Montgomery, NDOT PM
Steve Varela, P.E., COR
Gary Robinson, PMC PM
Ron Dukeshier, Granite PM

CC: Rodger Steen, ASI
Jim Buntin, BB&A
Bob Vince, CDM
Catherine Clark, JBR
Tom Lennon, WCRM

FR: Mark A. Demuth, EMC PM
Principal, MADCON Consultation Services

RE: ReTRAC Project – Mitigation Monitoring Program (MMP) **Quarterly Report –2nd Quarter 2005**

DATE: July 6, 2005

FILE: 19-11.2-0011

Attached please find the following summary reports for the 2nd Quarter 2005 covering the period April, May, and June 2005:

1. ReTRAC Project – Mitigation Monitoring Program (MMP) 2nd Quarter 2005 Report – Number of Notices/Compliance Reports per Month.
2. ReTRAC Project – Mitigation Monitoring Program (MMP) 2nd Quarter 2005 Report – Non-Compliance and Notice Details.
3. ReTRAC Project – Mitigation Monitoring Program (MMP) 2nd Quarter 2005 Report – Non-Compliance and Notice Location Maps.

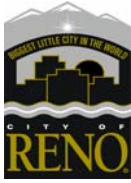
264 Keystone Ave.
Reno, Nevada 89503
Tel. (775) 348-5140
Fax (775) 348-5180



PO Box 1900
Reno, Nevada 89505
www.ReTRAC.org

ReTRAC Project - Mitigation Monitoring Program (MMP) Quarterly Report Second Quarter 2005

prepared by the Environmental Management Consultant (EMC) Team

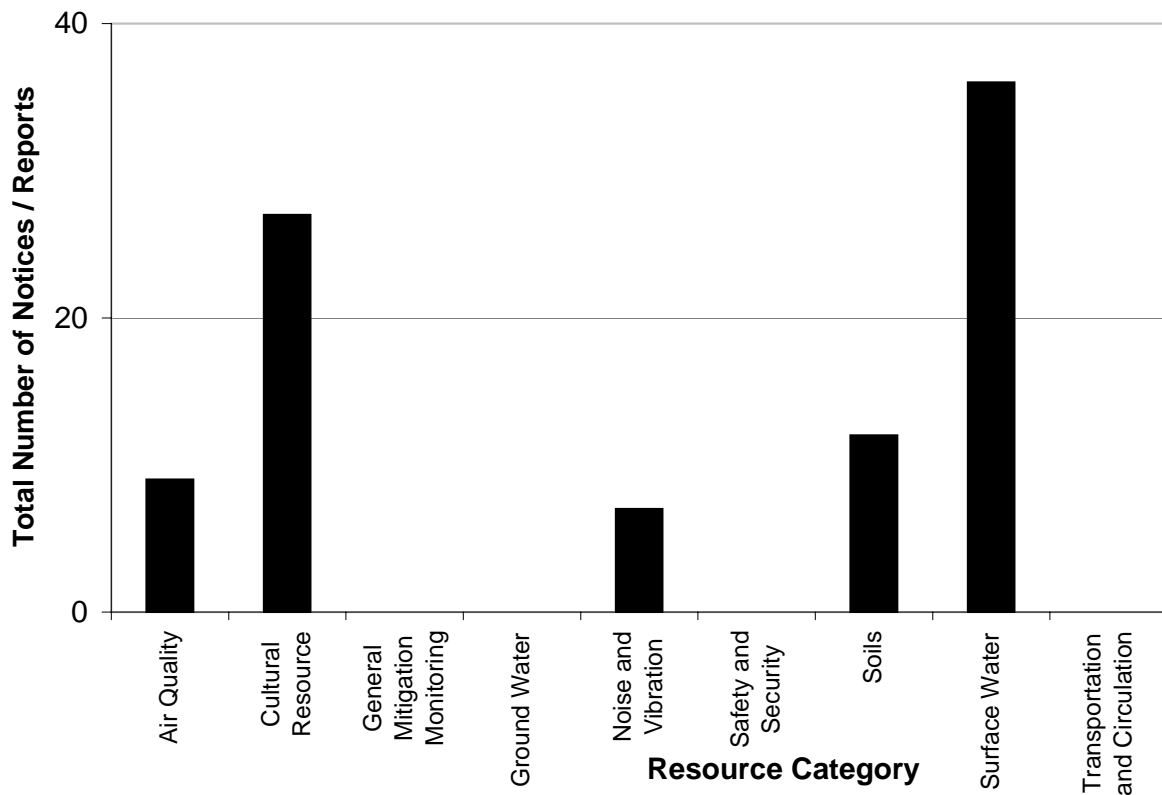


Number of Notices / Reports per Month

Resource Category	April			May			June			Q2 Totals		
	CR	NCN	NCR	CR	NCN	NCR	CR	NCN	NCR	CR	NCN	NCR
Air Quality	3	-	-	3	-	-	3	-	-	9	-	-
Cultural Resource	22	-	-	4	-	-	1	-	-	27	-	-
General Mitigation Monitoring	-	-	-	-	-	-	-	-	-	-	-	-
Ground Water	-	-	-	-	-	-	-	-	-	-	-	-
Noise and Vibration	3	-	-	4	-	-	-	-	-	7	-	-
Safety and Security	-	-	-	-	-	-	-	-	-	-	-	-
Soils	2	-	-	4	-	-	6	-	-	12	-	-
Surface Water	13	-	-	19	1	-	3	-	-	35	1	-
Transportation and Circulation	-	-	-	-	-	-	-	-	-	-	-	-
Totals	43	-	-	34	1	-	13	-	-	90	1	-

CR = Compliance Report NCN = Non-Compliance Notice NCR = Non-Compliance Report

Mitigation Monitoring Reports Filed During 2nd Quarter



Q2 2005 Non-Compliance Details

Report ID: 4341

Type: Notice

Resource: Surface Water

Observed: 5/5/2005 1:10:00 PM

Station: 2572+00

Submitted: 5/5/2005 1:45:41 PM

Easting: 257260

Reported by: Demuth

Northing: 4378778

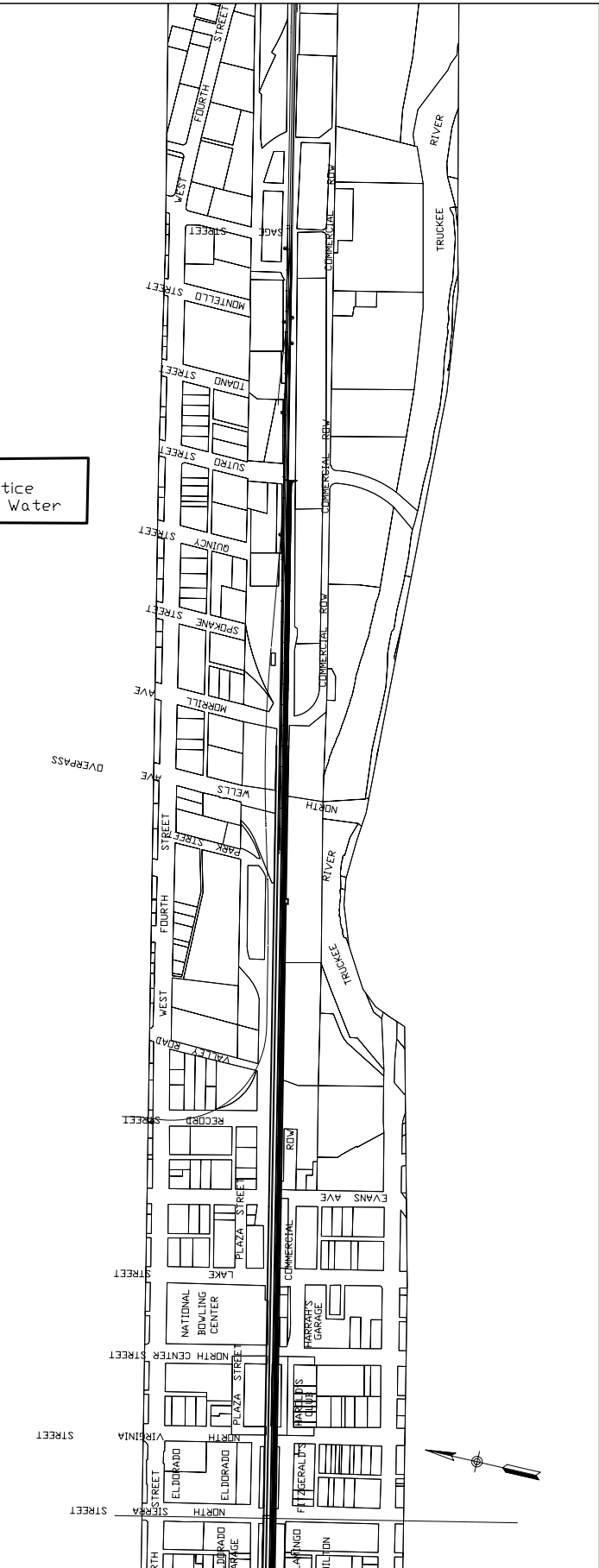
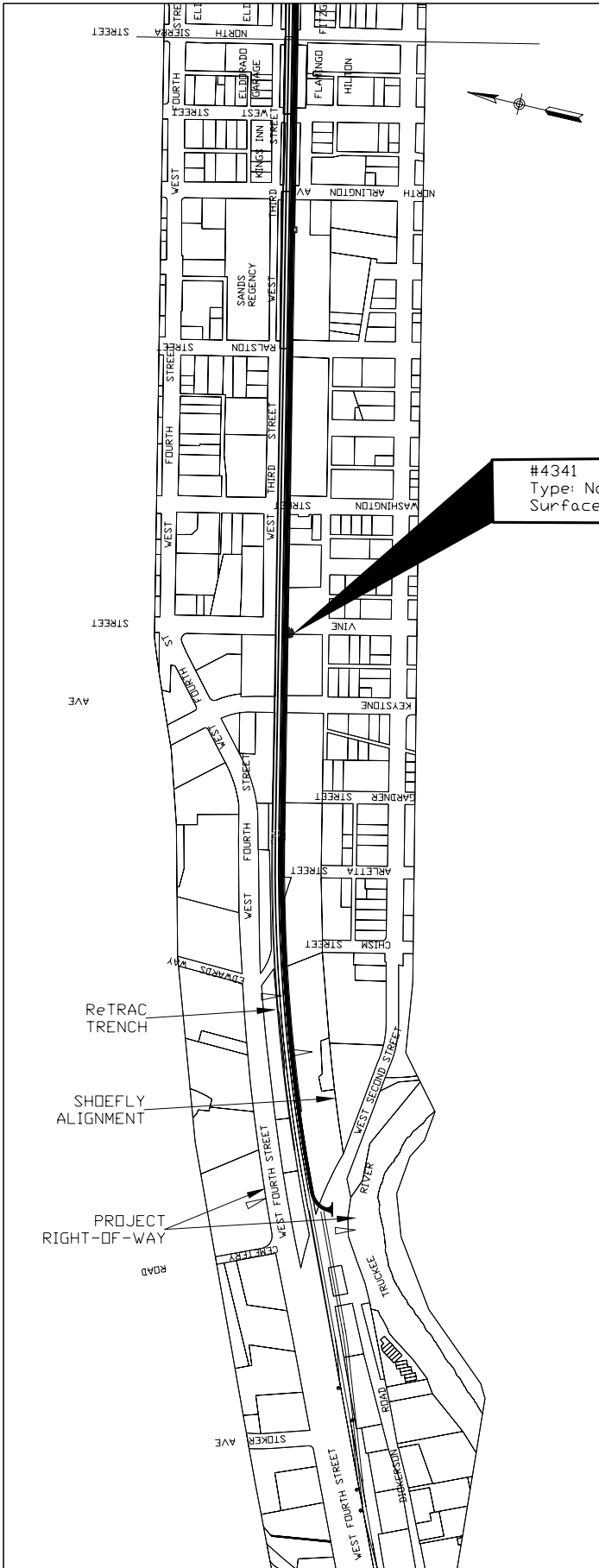
Location: Vine

Elevation: 4500

Measure(s): C-3

Comment: Granite's work was stopped when EMC noted stormdrain leakage from manhole riser was being pumped back into stormdrain. Any water, regardless of source which is ponded in dirt may not be discharged to the stormdrain system per Granite's SWPPP and NDEP NPDES Permit. Granite's supervision was notified and corrective actions were taken. Manholes were pulled downstream to determine if a plum had been discharged. None was noted and photos were taken. Granite is to prepare incident report to be submitted to EMC.-----Follow-up (05-09-2005 by dlaprairie):Labor crew digging out storm drain ditch in trench encountered groundwater. A pump was installed and the crew started pumping into one of the siphon manholes (see photos). Crew was informed that this activity constituted an illegal discharge to the storm drain system which leads directly to the Truckee River. Pumping activities were curtailed. Any future removal of water from the trench must be treated prior to disposal into the sanitary sewer rather than the storm drain system. This discharge was recognized early and the volume disposed of is considered to be de minimus. D. LaPrairie 5/6/05

N:\ACAD2000\17047\37061\fig_04-2003-NONCOMPLIANCE-DETAILS 01/05/04 14:53 talbotwk XREFS: ReL_site_map_utm27m_revised



DATE	TIME	LOCATION

RENO ReTRAC

ReTRAC THE GRANITE TEAM

SUBM. _____
 APPR. _____

Q2 2005
Non-Compliance
Details

CONTRACT NO.	
DRAWING NO.	REV
SCALE 1" = 800'	
SHEET NO.	