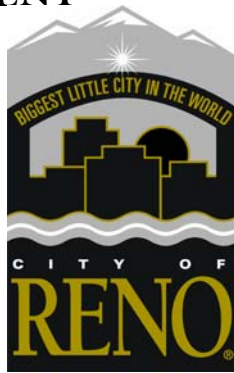


PUBLIC WORKS DEPARTMENT

Steve Varela, P.E.
*Director of Public Works/
City Engineer*
(775) 334-2215



John Sparnicht, P.E.
Project Manager
(775) 334-1286

TO: Ted Bendure, FHWA
Todd Montgomery, NDOT PM
John Sparnicht, COR PM
Gary Robinson, PMC PM
Jim Laing, Granite PM

CC: Steve Varela, P.E., COR
Don Olbert, Granite QAM
Candice Siwarga, Granite Env
Rodger Steen, ASI
Jim Buntin, BB&A
Bob Vince, CDM
Catherine Clark, JBR
Tom Lennon, WCRM

FR: Mark A. Demuth, EMC PM
Principal, MADCON Consultation Services

RE: ReTRAC Project – Mitigation Monitoring Program (MMP) **Quarterly Report – 2nd Quarter 2003**

DATE: July 2, 2003

FILE: 19-11.2-0003

Attached please find the following summary reports for the 2nd Quarter 2003 covering the period April, May, and June of 2003:

1. ReTRAC Project – Mitigation Monitoring Program (MMP) 2nd Quarter 2003 Report – Number of Notices/Compliance Reports per Month.
2. ReTRAC Project – Mitigation Monitoring Program (MMP) 2nd Quarter 2003 Report – Non-Compliance Details and Location Map.
3. ReTRAC Project – Mitigation Monitoring Program (MMP) 2nd Quarter 2003 Report – Non-Compliance Location Map.

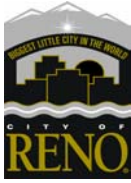
264 Keystone Ave.
Reno, Nevada 89503
Tel. (775) 348-5140
Fax (775) 348-5180



PO Box 1900
Reno, Nevada 89505
www.ReTRAC.org
SparnichtJ@ci.reno.nv.us

ReTRAC Project - Mitigation Monitoring Program (MMP) Quarterly Report Second Quarter 2003

prepared by the Environmental Management Consultant (EMC) Team

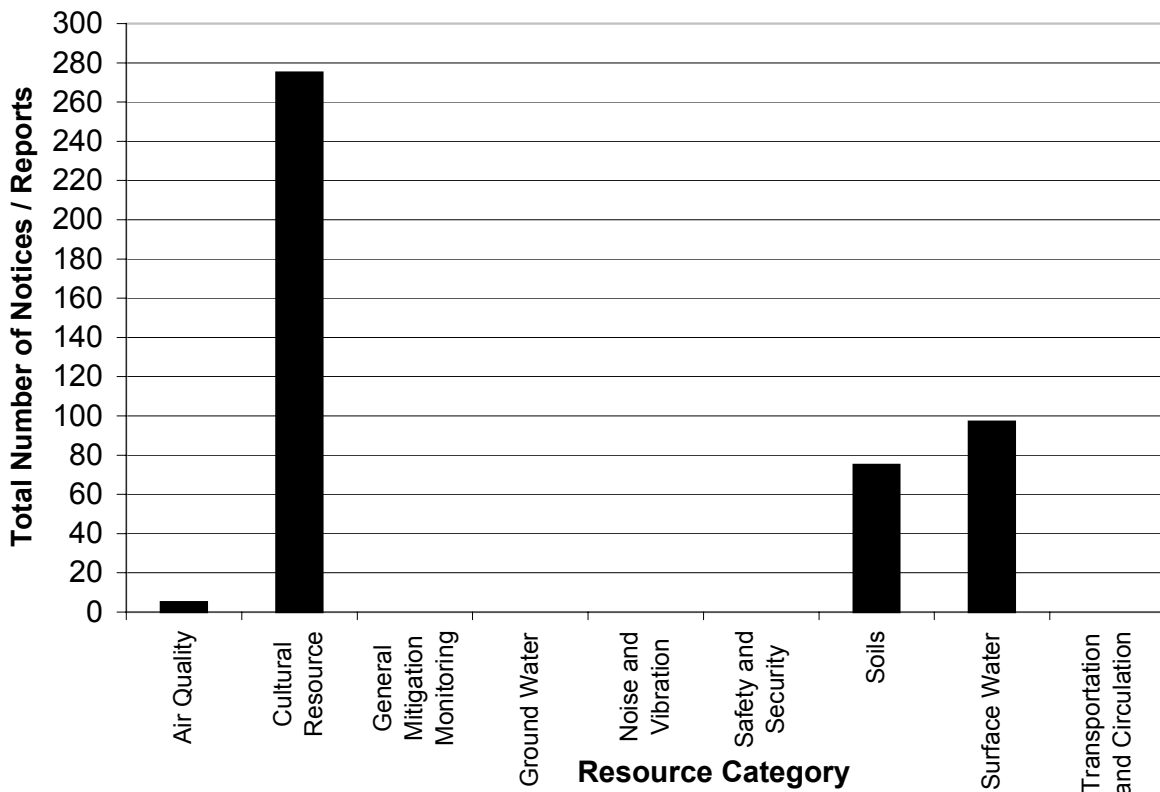


Number of Notices / Reports per Month

Resource Category	April			May			June			Q2 Totals		
	CR	NCN	NCR	CR	NCN	NCR	CR	NCN	NCR	CR	NCN	NCR
Air Quality	-	-	-	5	-	-	-	-	-	5	-	-
Cultural Resource	66	2	-	73	-	-	134	-	-	273	2	-
General Mitigation Monitoring	-	-	-	-	-	-	-	-	-	-	-	-
Ground Water	-	-	-	-	-	-	-	-	-	-	-	-
Noise and Vibration	-	-	-	-	-	-	-	-	-	-	-	-
Safety and Security	-	-	-	-	-	-	-	-	-	-	-	-
Soils	17	-	-	20	-	-	38	-	-	75	-	-
Surface Water	21	-	-	32	-	-	44	-	-	97	-	-
Transportation and Circulation	-	-	-	-	-	-	-	-	-	-	-	-
Totals	104	2	-	130	-	-	216	-	-	450	2	-

CR = Compliance Report NCN = Non-Compliance Notice NCR = Non-Compliance Report

Mitigation Monitoring Reports Filed During 2nd Quarter



Q2 Non-Compliance Details

Report ID: 484

Type: Notice

Resource: Cultural Resource

Observed: 4/29/2003 8:08:00 PM

Station: 2583+00

Submitted: 5/3/2003 10:17:33 AM

Easting: 257625

Reported by: Peterson

Northing: 4378823

Location: Yard

Elevation: 4450

Measure(s): C-40

Comment: Scraping of the Shoofly ROW was well underway and the Discovery 16 features had been scraped away when monitors were notified. We did have SHPO clearance to work but no monitors were notified of the digging.

Report ID: 485

Type: Notice

Resource: Cultural Resource

Observed: 4/29/2003 8:20:00 AM

Station: 2559+00

Submitted: 5/3/2003 10:18:06 AM

Easting: 256807

Reported by: Peterson

Northing: 4378650

Location: Yard

Elevation: 4450

Measure(s): C-40

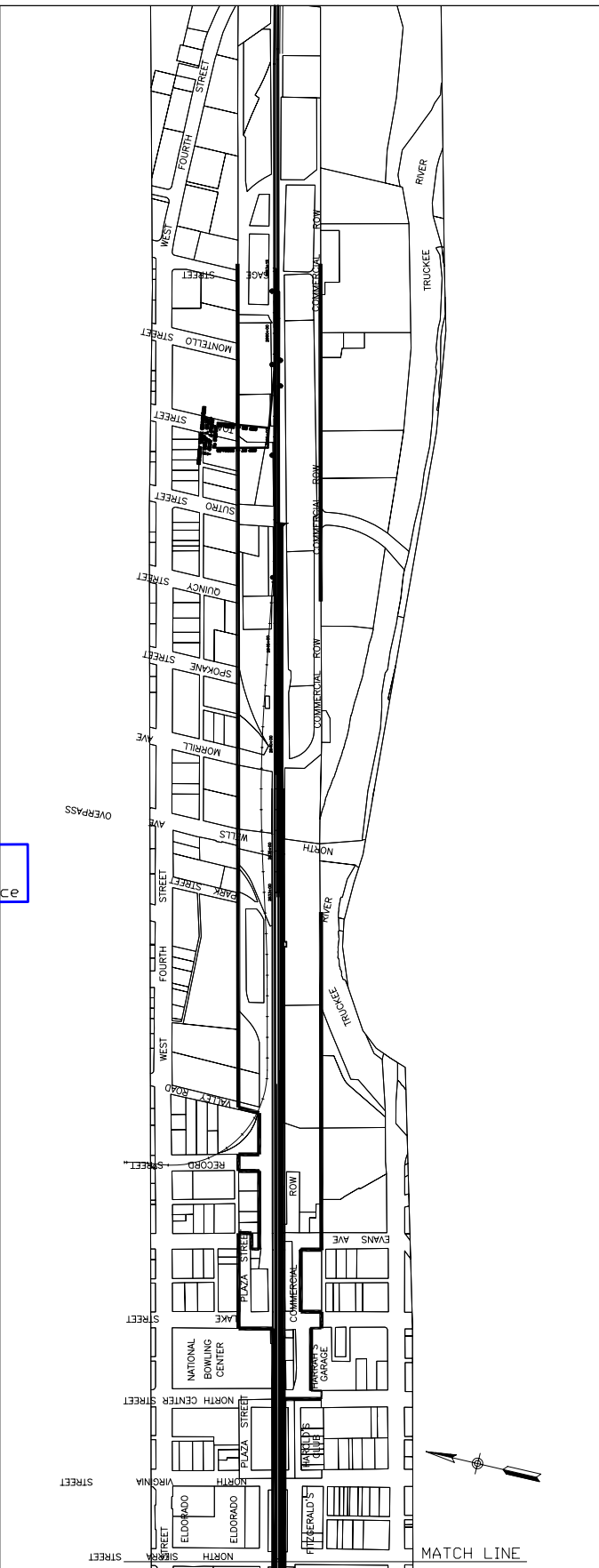
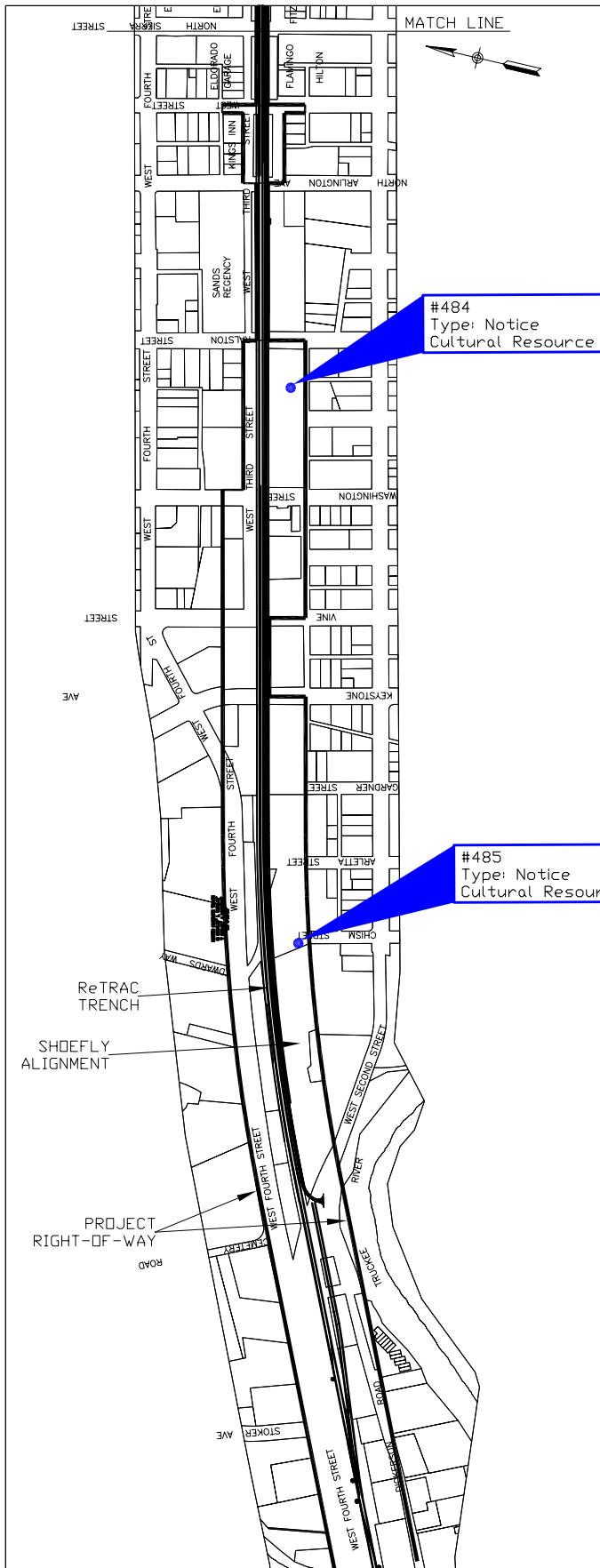
Comment: Granite digging mud pits for Conden Johnson drill rig. One already completed when monitors found out about digging. Digging stopped by Granite. RP arrived and monitored second and found two metate fragments in the fill. Nothing noted in the backdirt of the first.

x

x

x

N:\ACAD2000\17047\37061\fig\ReT_site_map-2003 04/04/03 14:39 talbotwk



DATE	TIME	LOCATION

RENO ReTRAC

ReTRAC THE GRANITE TEAM

SUBM. _____
APPR. _____

Q2 2003
Non-Compliance
Location Map

CONTRACT NO.	
DRAWING NO.	REV
SCALE 1" = 800'	
SHEET NO.	